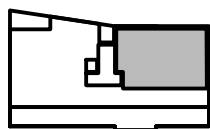
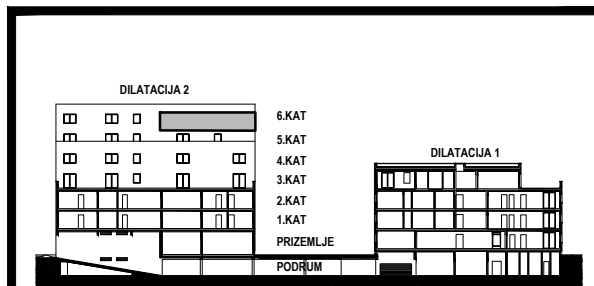
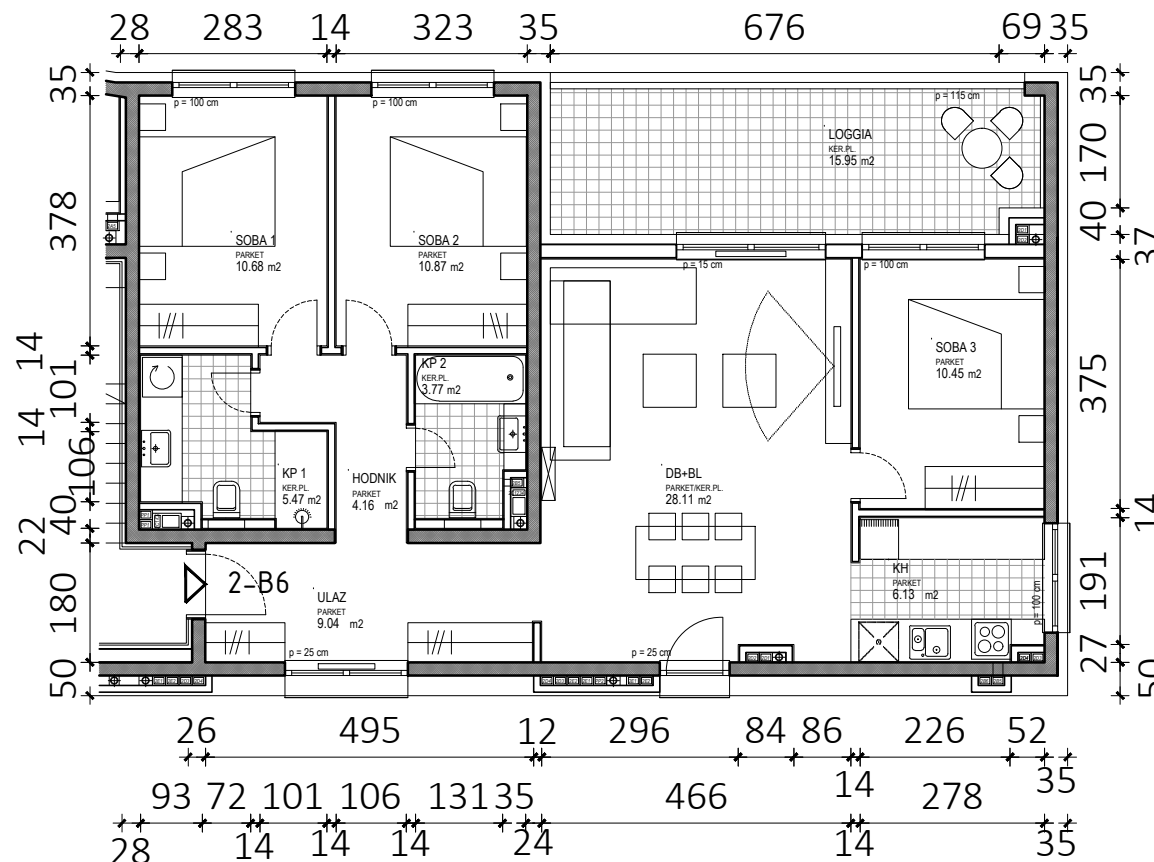


D2 - 5.KAT			
STAN 2-B6	netto-površina (m²)	k	netto-obr.površina (m²)
Ulaz	9,04	1,00	9,04
Hodnik	4,16	1,00	4,16
KP1	5,47	1,00	5,47
KP2	3,77	1,00	3,77
Soba1	10,68	1,00	10,68
Soba2	10,87	1,00	10,87
Soba3	10,45	1,00	10,45
DB+BL	28,11	1,00	28,11
KH	6,13	1,00	6,13
UKUPNO	88,68		88,68
Loggia	15,95	0,75	11,96
STAN 2-B6 UKUPNO	104,63		100,64



D2

2-B6