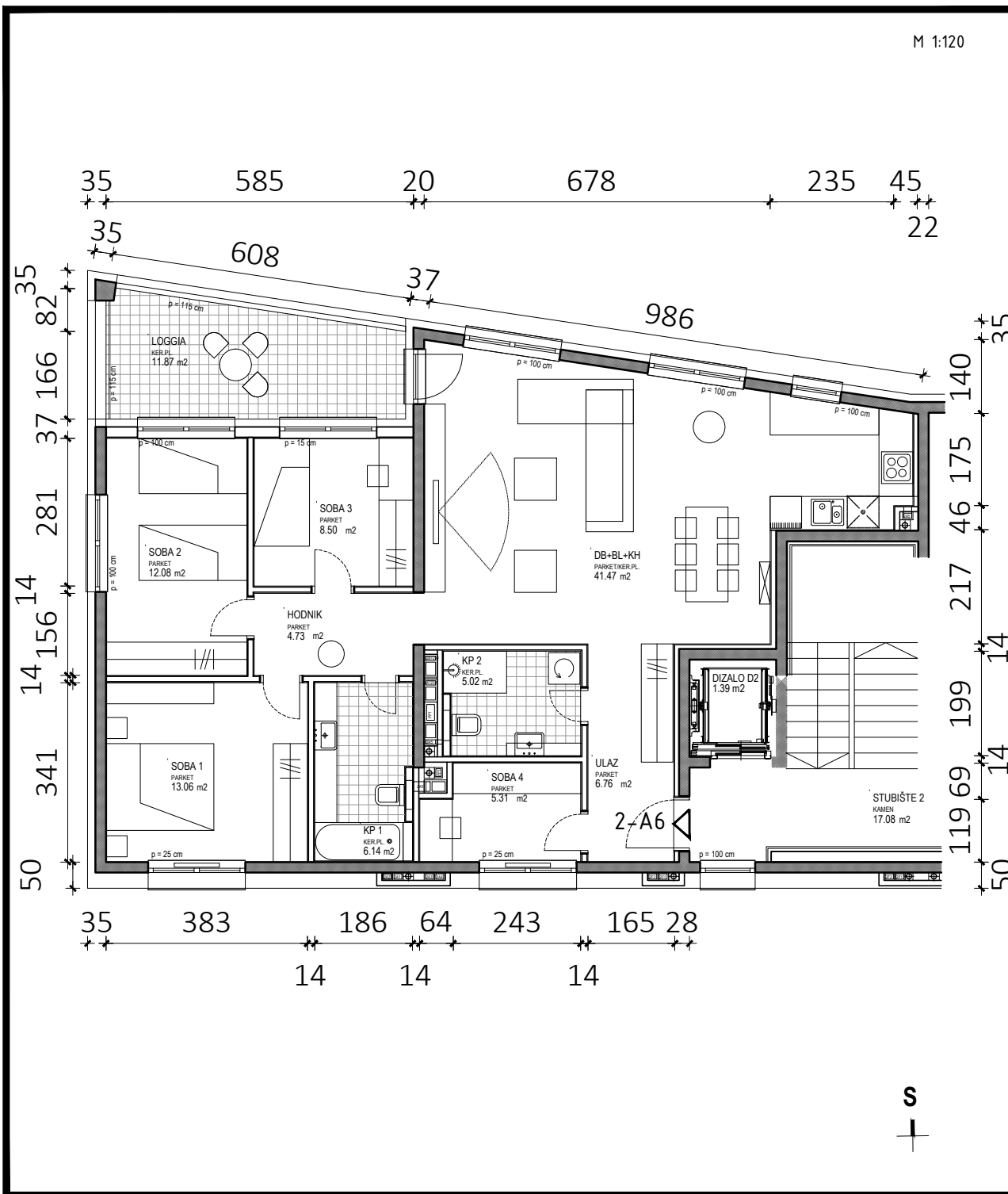
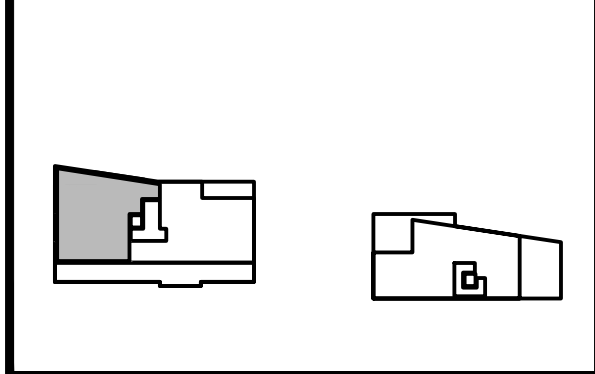
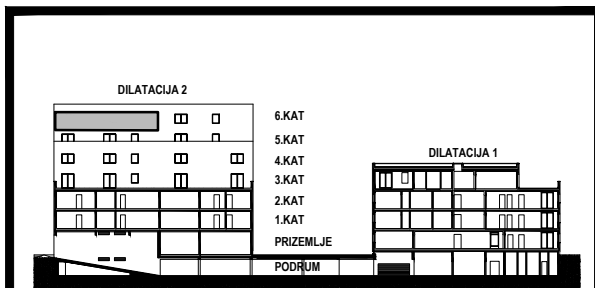


D2 - 6.KAT			
STAN 2-A6	netto-površina (m²)	k	netto-obr.površina (m²)
Ulaz	6,76	1,00	6,76
Hodnik	4,73	1,00	4,73
KP1	6,14	1,00	6,14
KP2	5,02	1,00	5,02
Soba1	13,06	1,00	13,06
Soba2	12,08	1,00	12,08
Soba3	8,50	1,00	8,50
Soba4	5,31	1,00	5,31
DB+BL+KH	41,47	1,00	41,47
UKUPNO	103,07		103,07
Loggia	11,87	0,75	8,90
STAN 2-A6 UKUPNO	114,94		111,97



D2

2-A6