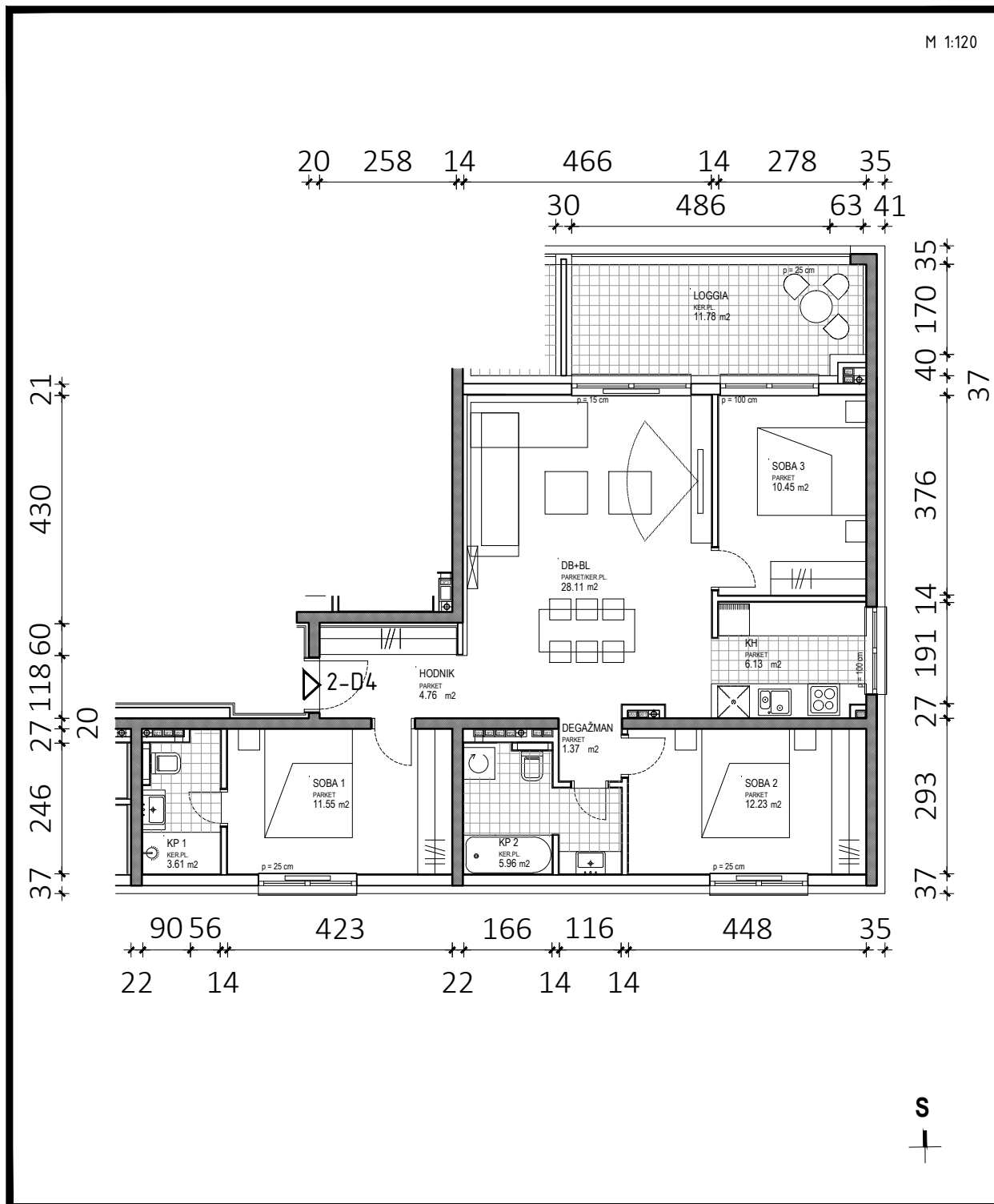
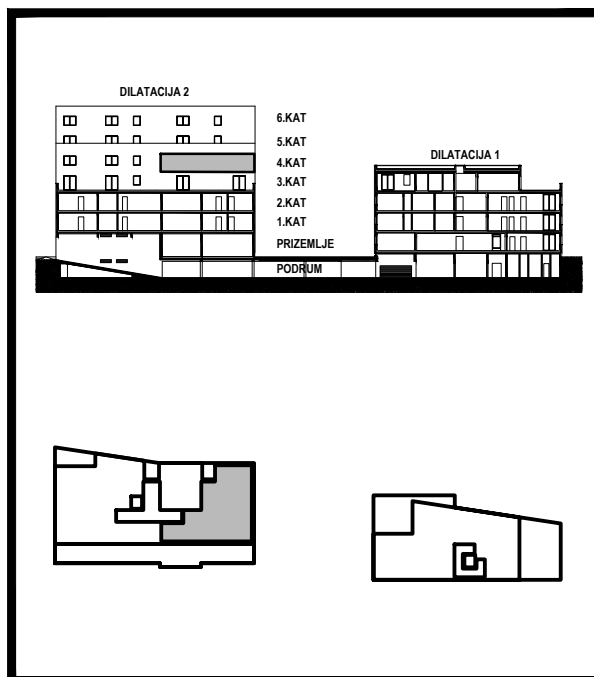


D2 - 4.KAT			
STAN 2-D4	netto-površina ( m <sup>2</sup> )	k	netto-obr.površina ( m <sup>2</sup> )
Hodnik	4,76	1,00	4,76
Degažman	1,37	1,00	1,37
KP1	3,61	1,00	3,61
KP2	5,96	1,00	5,96
Soba1	11,55	1,00	11,55
Soba2	12,23	1,00	12,23
Soba3	10,45	1,00	10,45
DB+BL	28,11	1,00	28,11
KH	6,13	1,00	6,13
<b>UKUPNO</b>	<b>84,17</b>		<b>84,17</b>
Loggia	11,78	0,75	8,84
<b>STAN 2-D4 UKUPNO</b>	<b>95,95</b>		<b>93,01</b>



D2

2-D4