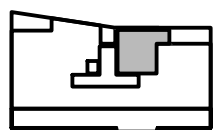
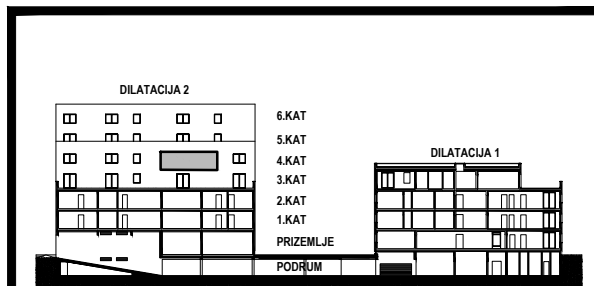
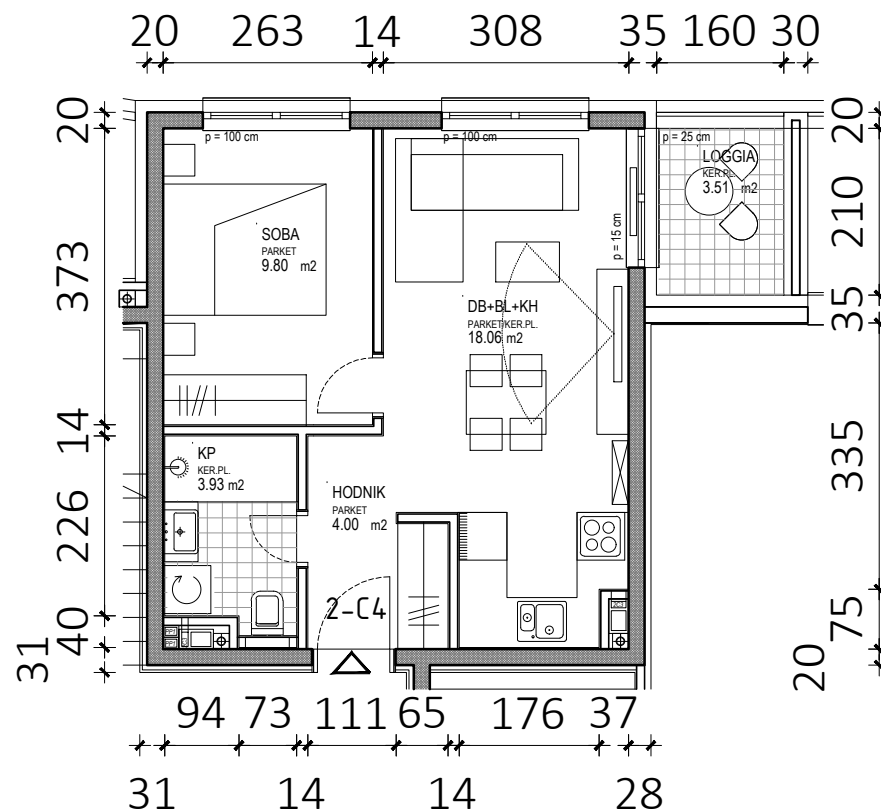


D2 - 4.KAT			
STAN 2-C4	netto-površina (m ²)	k	netto-obr.površina (m ²)
Hodnik	4,00	1,00	4,00
KP	3,93	1,00	3,93
Soba	9,80	1,00	9,80
DB+BL+KH	18,06	1,00	18,06
UKUPNO	35,79		35,79
Loggia	3,51	0,75	2,63
STAN 2-C4 UKUPNO	39,30		38,42



D2

2-C4