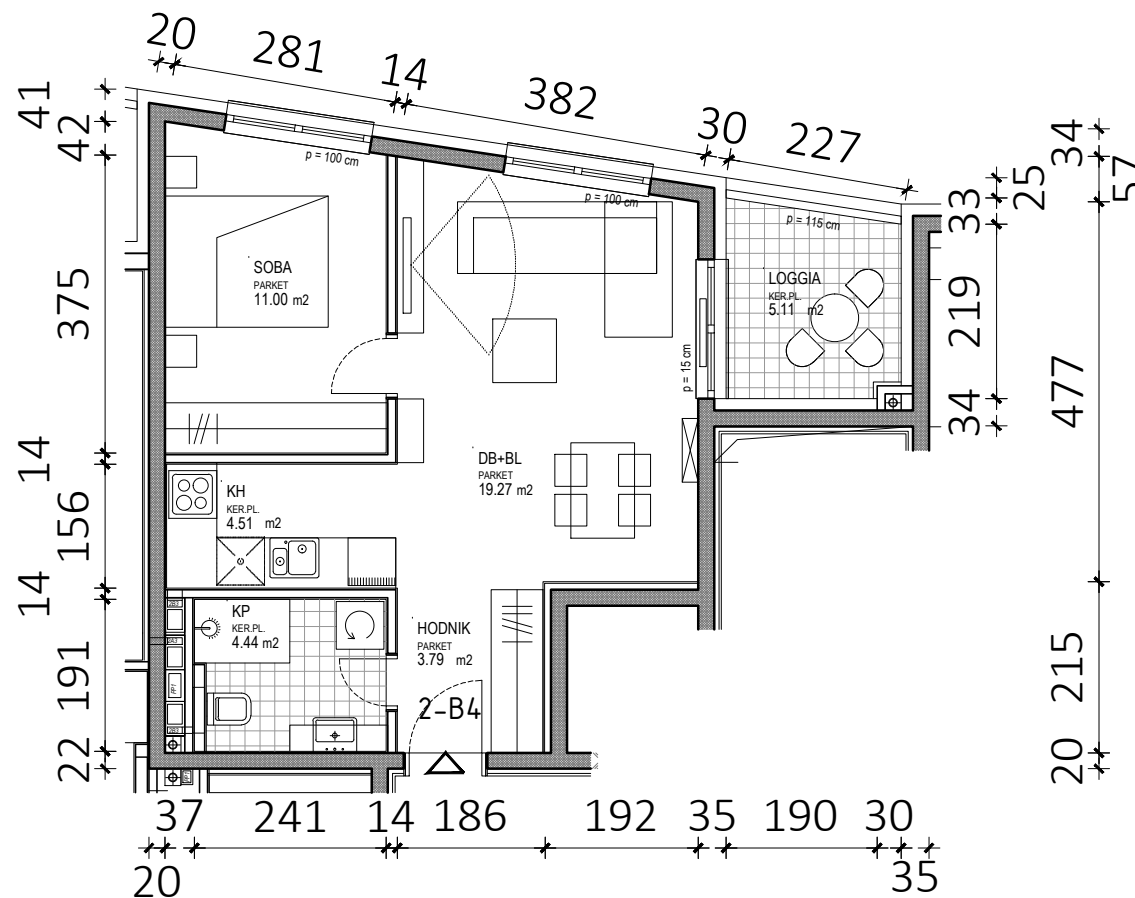
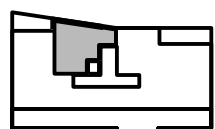
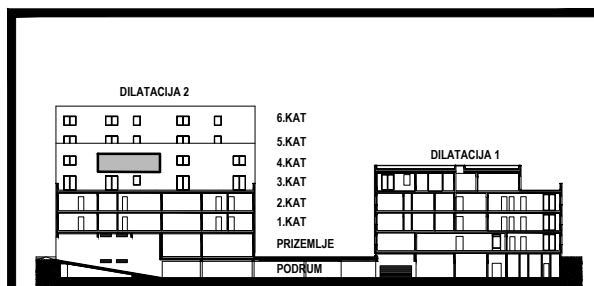


D2 - 4.KAT			
STAN 2-B4	netto-površina (m ²)	k	netto-obr.površina (m ²)
Hodnik	3,79	1,00	3,79
KP	4,44	1,00	4,44
Soba	11,00	1,00	11,00
DB+BL	19,27	1,00	19,27
KH	4,51	1,00	4,51
UKUPNO	43,01		43,01
Loggia	5,11	0,75	3,83
STAN 2-B4 UKUPNO	48,12		46,84



D2

2-B4