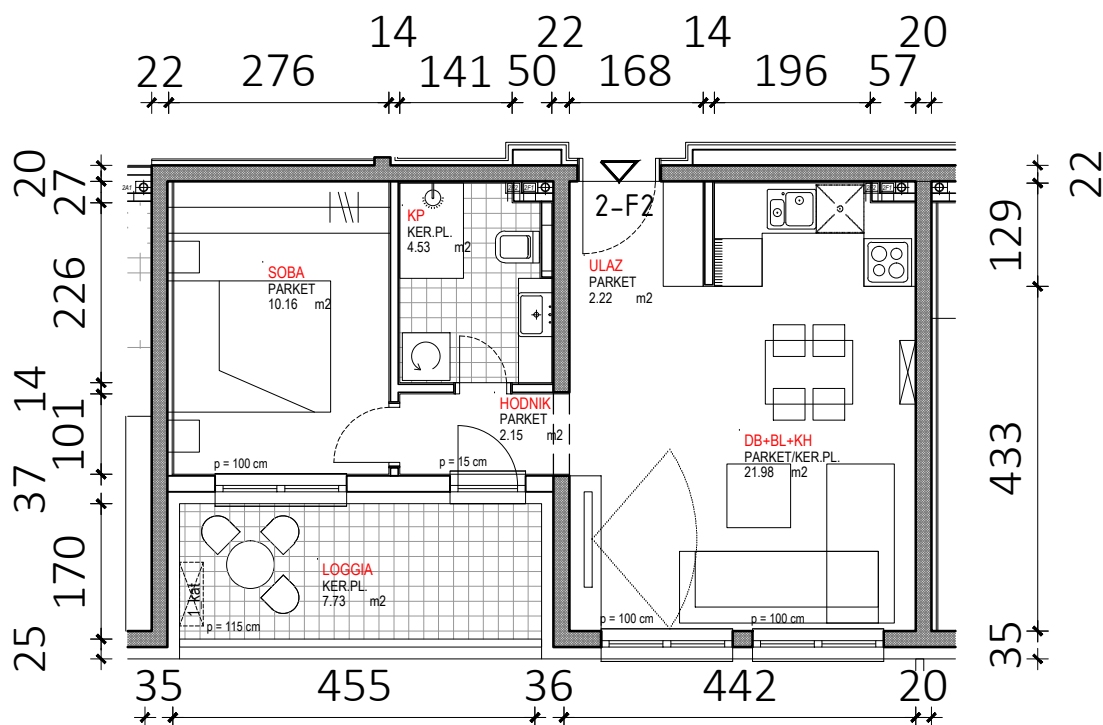
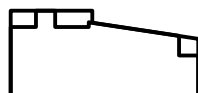
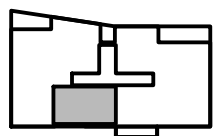
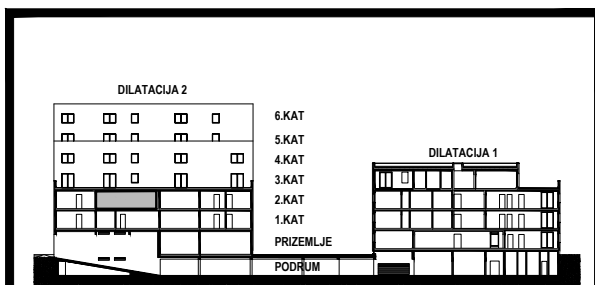


D2 - 2.KAT			
STAN 2-F2	netto-površina (m²)	k	netto-obr.površina (m²)
Ulaz	2,22	1,00	2,22
Hodnik	2,15	1,00	2,15
KP	4,53	1,00	4,53
Soba	10,16	1,00	10,16
DB+BL+KH	21,98	1,00	21,98
UKUPNO	41,04		41,04
Loggia	7,73	0,75	5,80
STAN 2-F2 UKUPNO	48,77		46,84



D2

2-F2