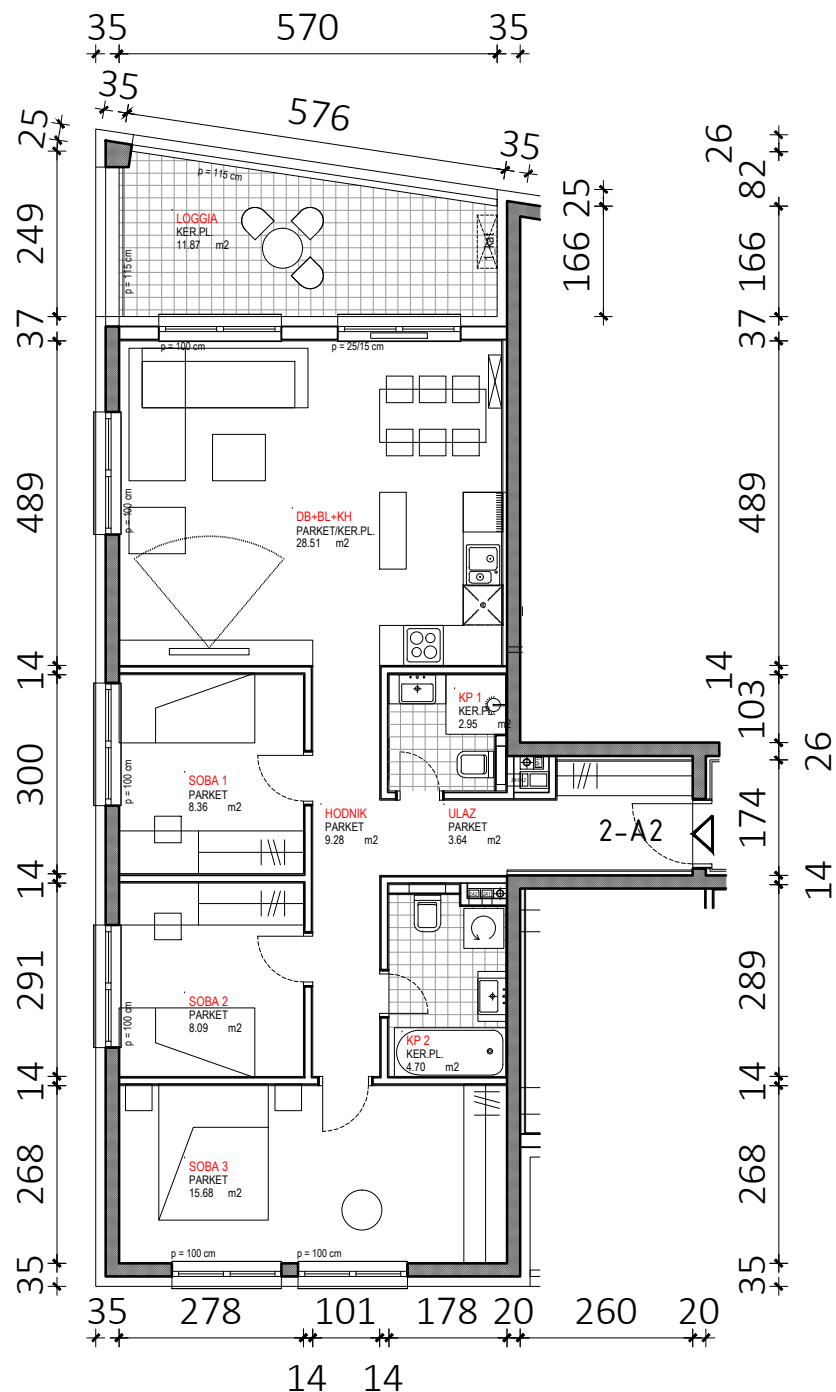
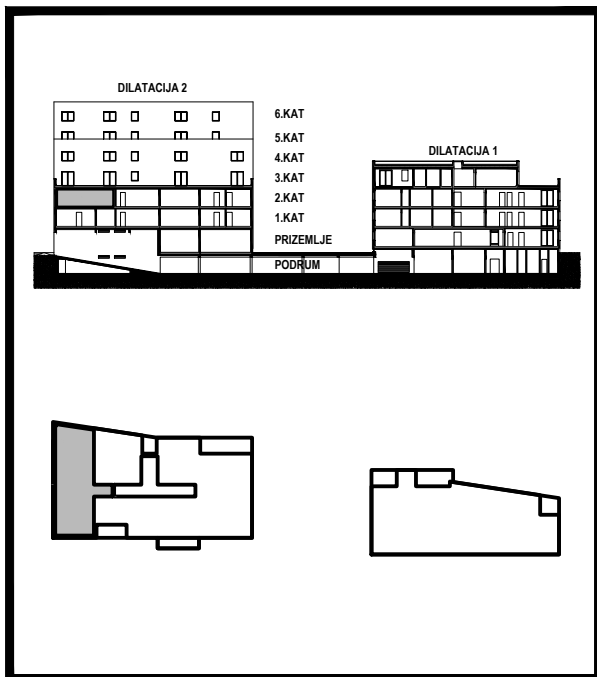


D2 - 2.KAT			
STAN 2-A2	netto-površina (m²)	k	netto-obr.površina (m²)
Ulaz	3,64	1,00	3,64
Hodnik	9,28	1,00	9,28
KP1	2,95	1,00	2,95
KP2	4,70	1,00	4,70
Soba1	8,36	1,00	8,36
Soba2	8,09	1,00	8,09
Soba3	15,68	1,00	15,68
DB+BL+KH	28,51	1,00	28,51
UKUPNO	81,21		81,21
Loggia	11,87	0,75	8,90
STAN 2-A2 UKUPNO	93,08		90,11



D2

2-A2