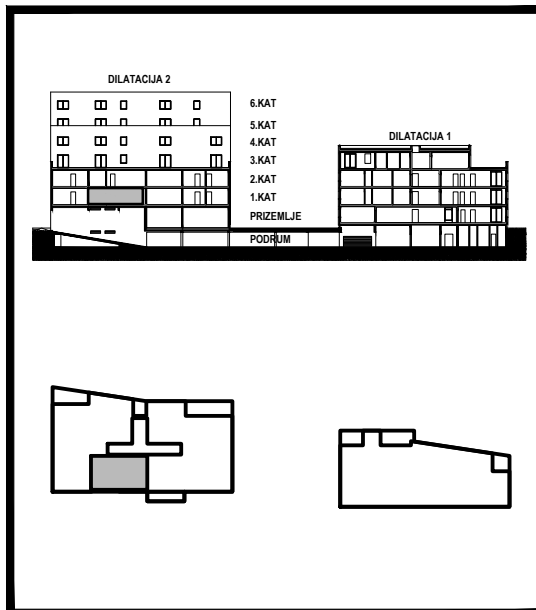
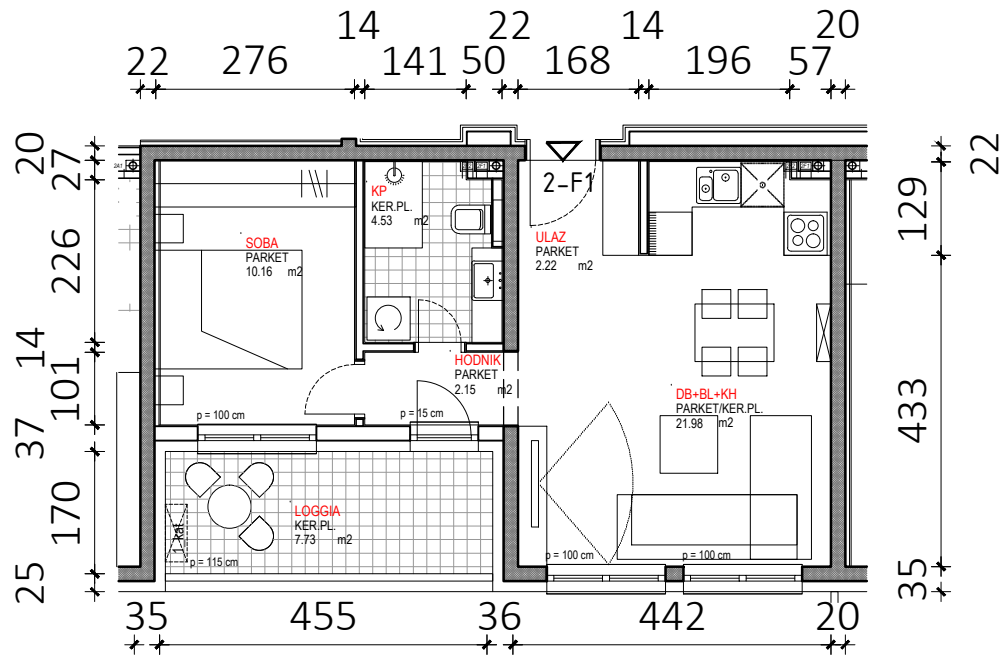


D2 - 1.KAT			
STAN 2-F1	netto-površina (m <sup>2</sup> )	k	netto-obr.površina (m <sup>2</sup> )
Ulaz	2,22	1,00	2,22
Hodnik	2,15	1,00	2,15
KP	4,53	1,00	4,53
Soba	10,16	1,00	10,16
DB+BL+KH	21,98	1,00	21,98
<b>UKUPNO</b>	<b>41,04</b>		<b>41,04</b>
Loggia	7,73	0,75	5,80
<b>STAN 2-F1 UKUPNO</b>	<b>48,77</b>		<b>46,84</b>



D2

2-F1

