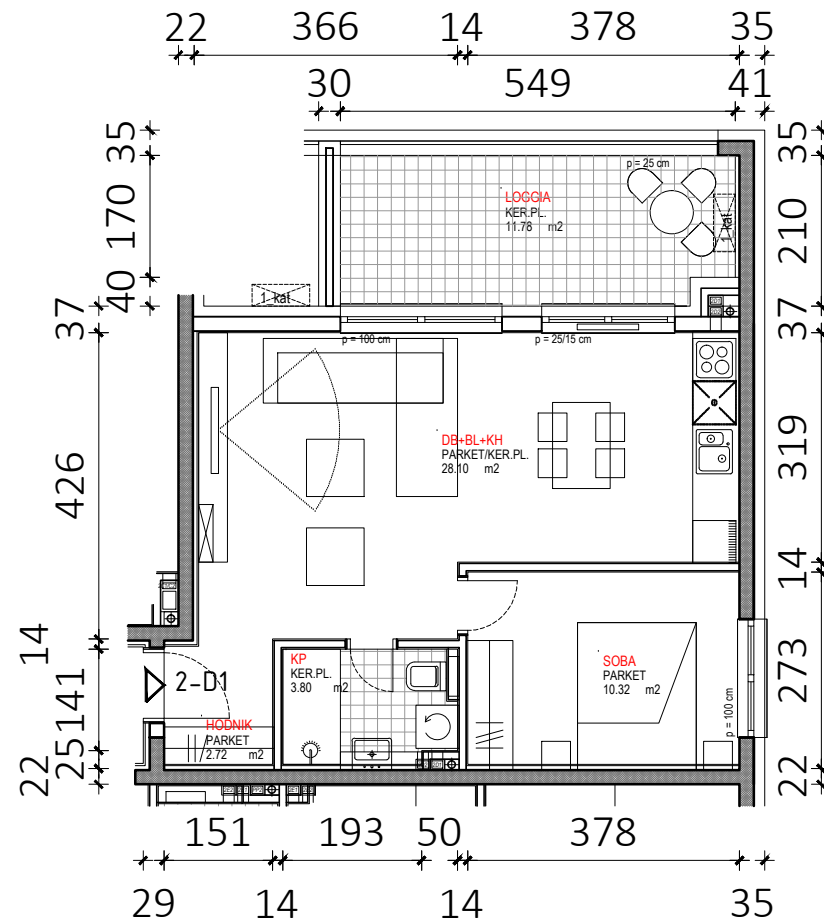
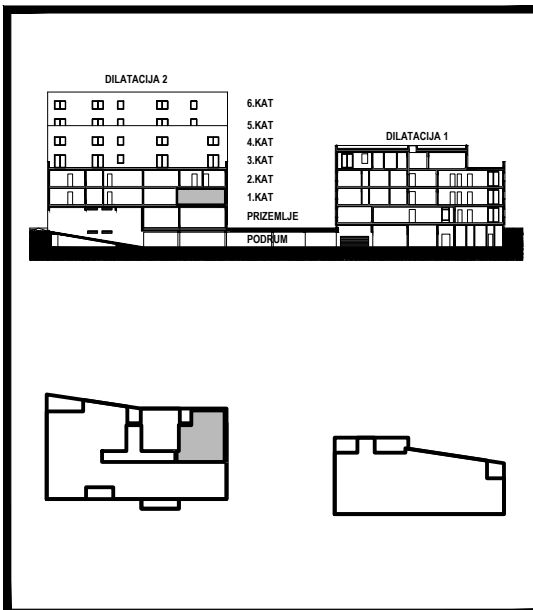


D2 - 1.KAT			
STAN 2-D1	netto-površina (m ²)	k	netto-obr.površina (m ²)
Hodnik	2,72	1,00	2,72
KP	3,80	1,00	3,80
Soba	10,32	1,00	10,32
DB+BL+KH	28,10	1,00	28,10
UKUPNO	44,94		44,94
Loggia	11,78	0,75	8,84
STAN 2-D1	56,72		53,78



D2

2-D1