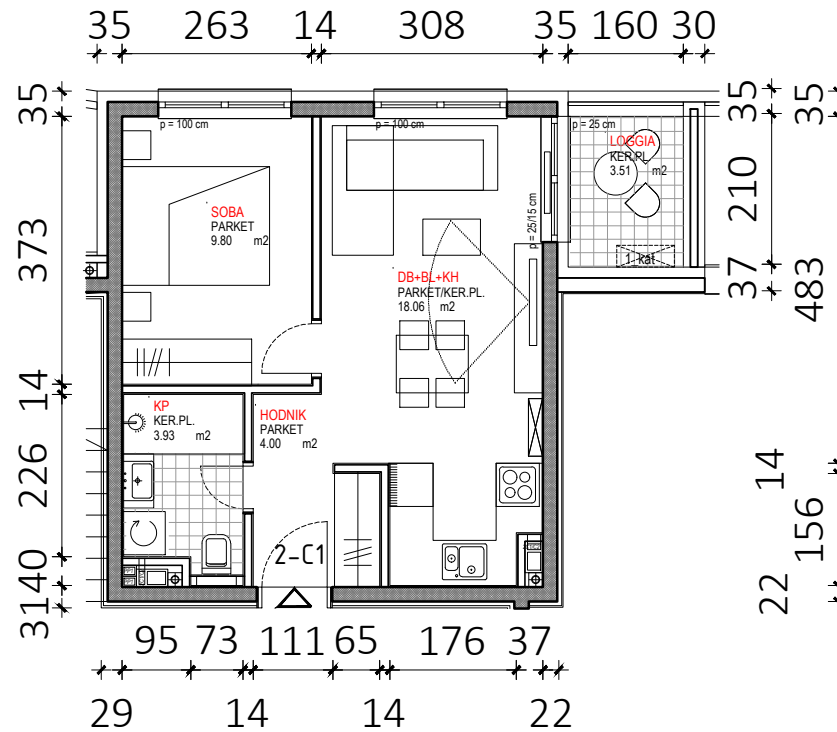
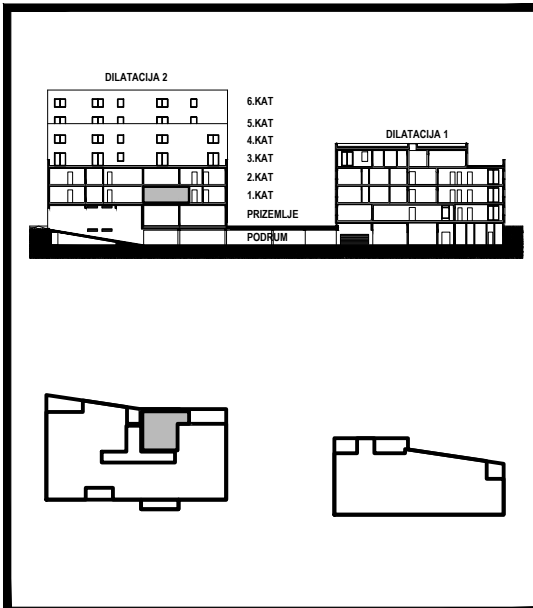


D2 - 1.KAT			
STAN 2-C1	netto-površina ( m <sup>2</sup> )	k	netto-obr.površina ( m <sup>2</sup> )
Hodnik	4,00	1,00	4,00
KP	3,93	1,00	3,93
Soba	9,80	1,00	9,80
DB+BL+KH	18,06	1,00	18,06
<b>UKUPNO</b>	<b>35,79</b>		<b>35,79</b>
Loggia	3,51	0,75	2,63
<b>STAN 2-C1 UKUPNO</b>	<b>39,30</b>		<b>38,42</b>



D2

2-C1