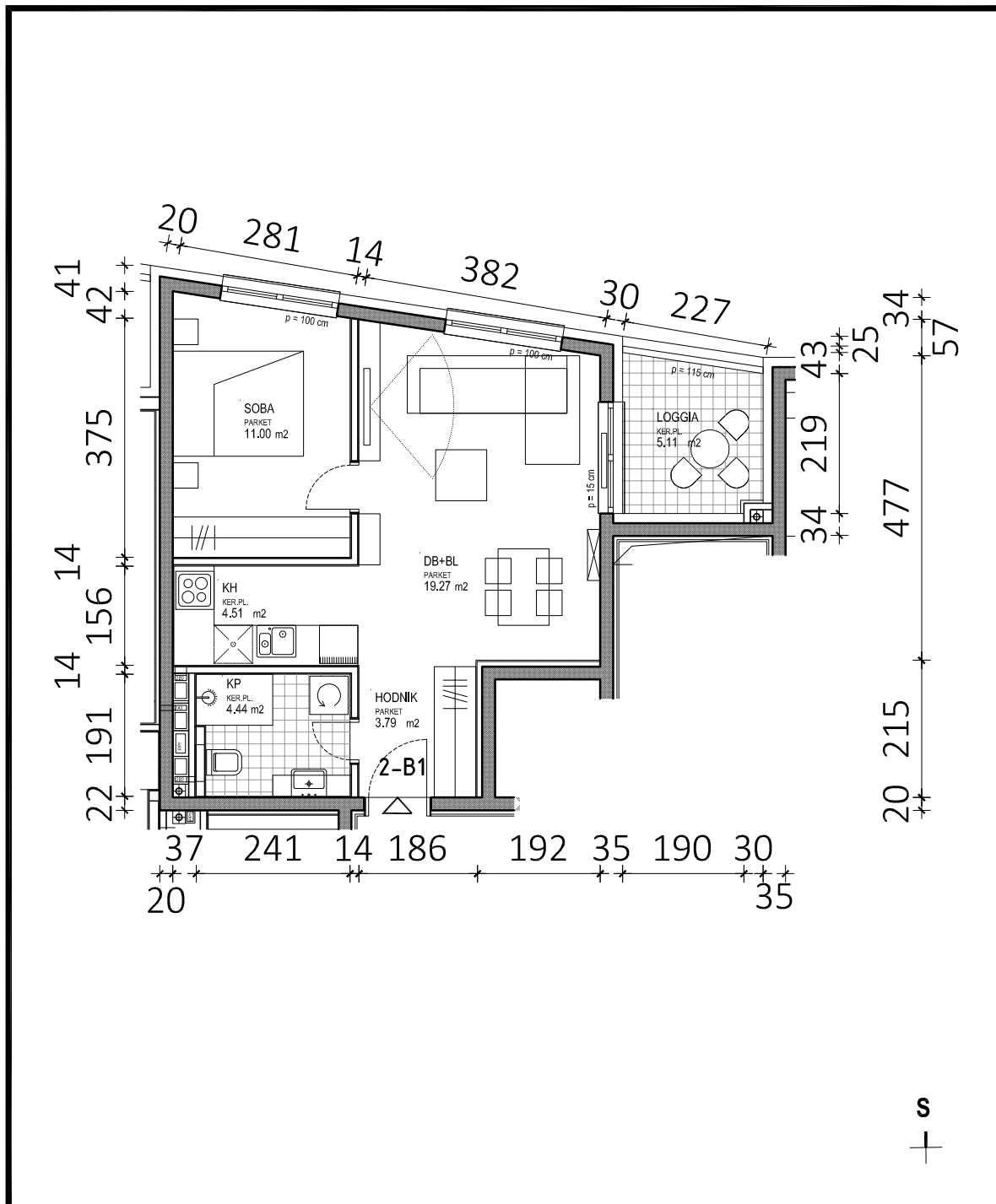
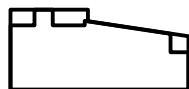
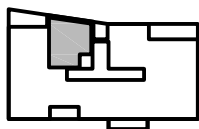
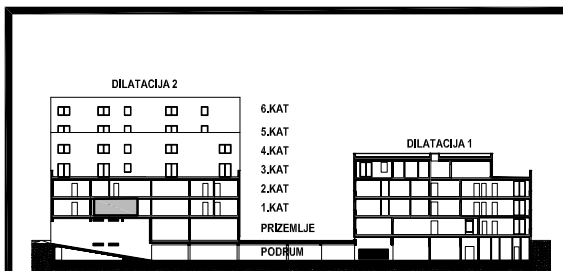


D2 - 1.KAT			
STAN 2-B1	netto-površina ( m <sup>2</sup> )	k	netto-obr.površina ( m <sup>2</sup> )
Hodnik	3,79	1,00	3,79
KP	4,44	1,00	4,44
Soba	11,00	1,00	11,00
DB+BL	19,27	1,00	19,27
KH	4,51	1,00	4,51
<b>UKUPNO</b>	<b>43,01</b>		<b>43,01</b>
Loggia	5,11	0,75	3,83
<b>STAN 2-B1 UKUPNO</b>	<b>48,12</b>		<b>46,84</b>



D2

2-B1