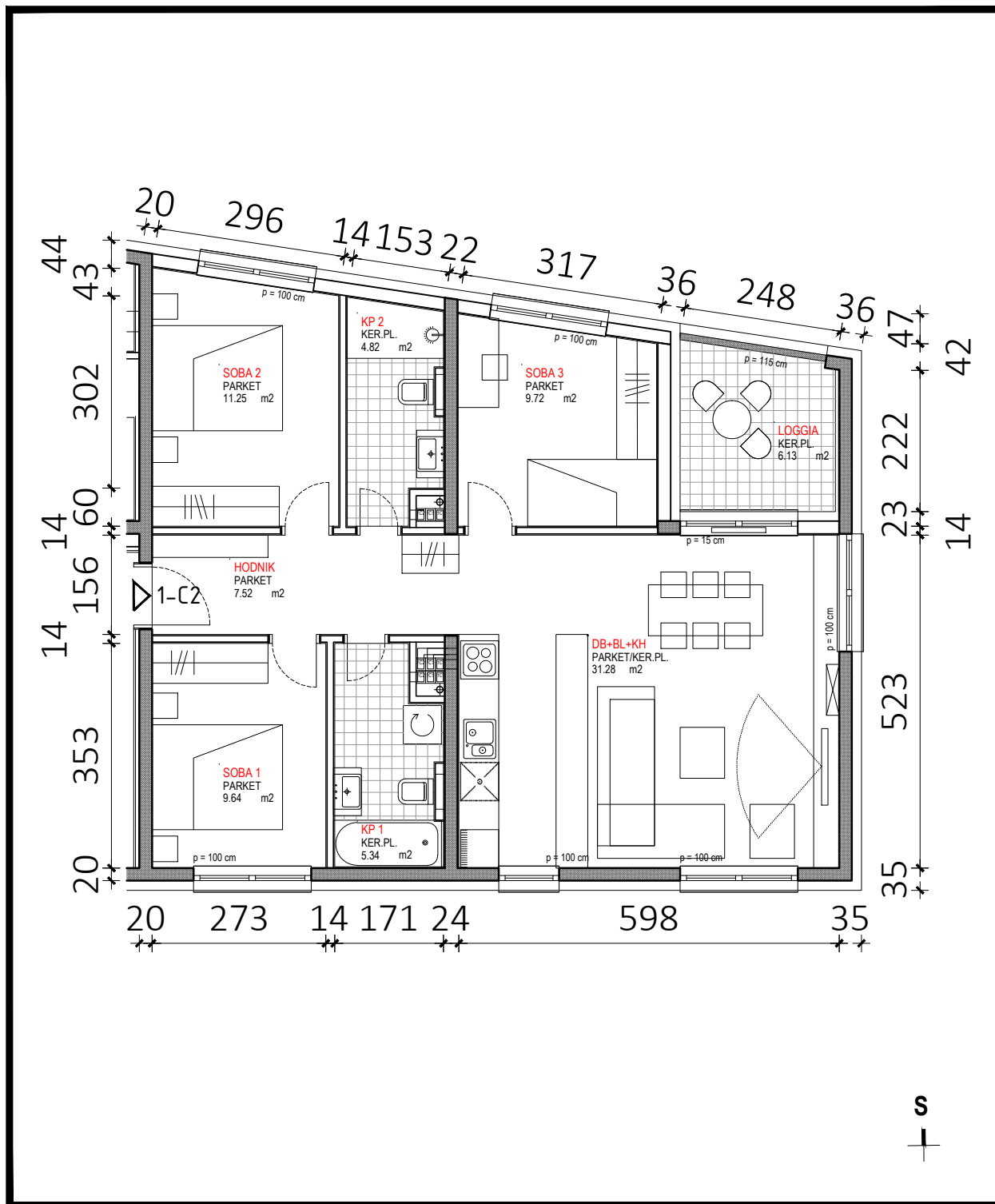
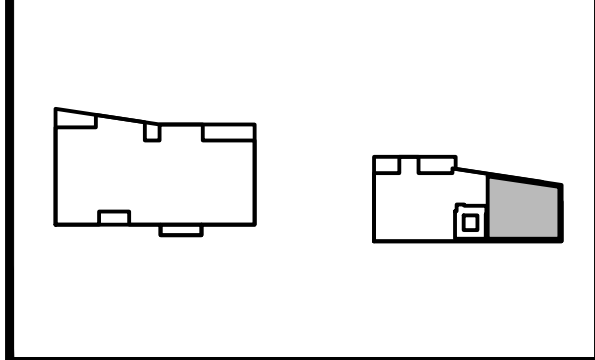
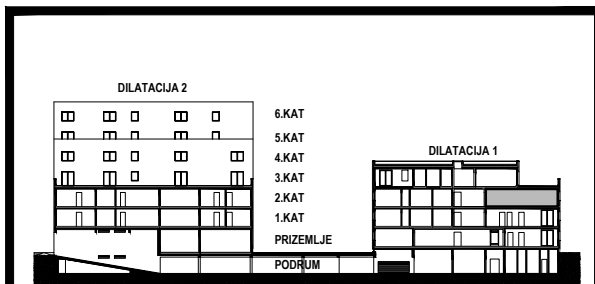


D1 - 2.KAT			
STAN 1-C2	netto-površina (m ²)	k	netto-obr.površina (m ²)
Hodnik	7,52	1,00	7,52
KP1	5,34	1,00	5,34
KP2	4,82	1,00	4,82
Soba1	9,64	1,00	9,64
Soba2	11,25	1,00	11,25
Soba3	9,72	1,00	9,72
DB+BL+KH	31,28	1,00	31,28
UKUPNO	79,57		79,57
Loggia	6,13	0,75	4,60
STAN 1-C2 UKUPNO	85,70		84,17



D1

1-C2