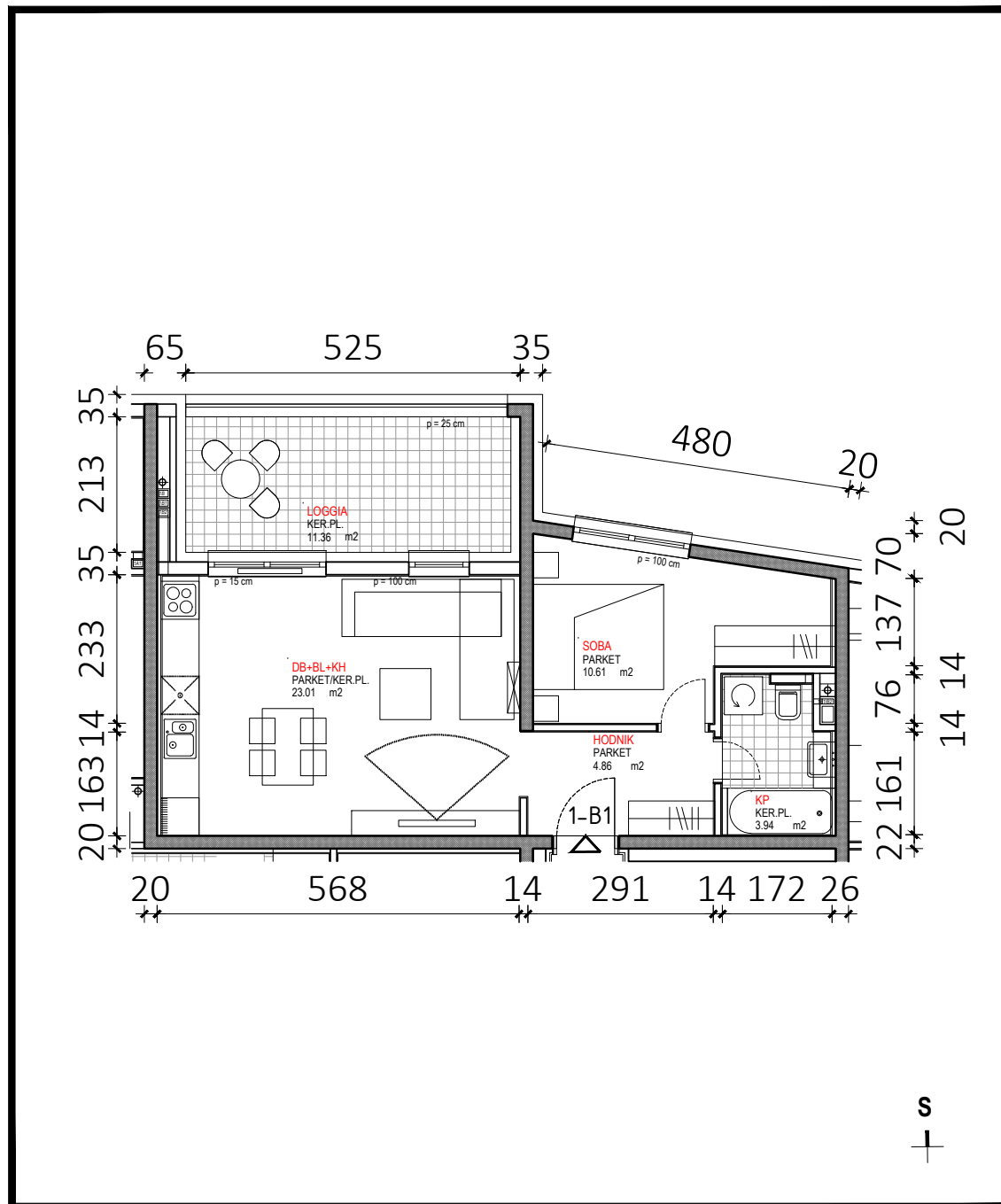
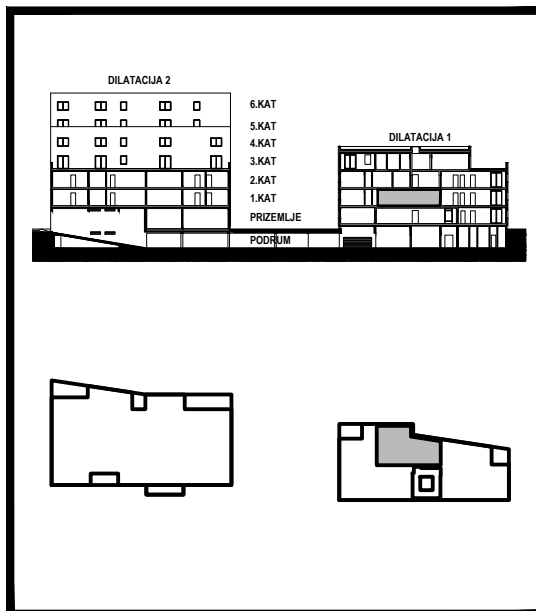


D1 - 1.KAT			
STAN 1-B1	netto-površina (m ²)	k	netto-obr.površina (m ²)
Hodnik	4,86	1,00	4,86
KP	3,94	1,00	3,94
Soba	10,61	1,00	10,61
DB+BL+KH	23,01	1,00	23,01
UKUPNO	42,42		42,42
Loggia	11,36	0,75	8,52
STAN 1-B1 UKUPNO	53,78		50,94



D1

1-B1