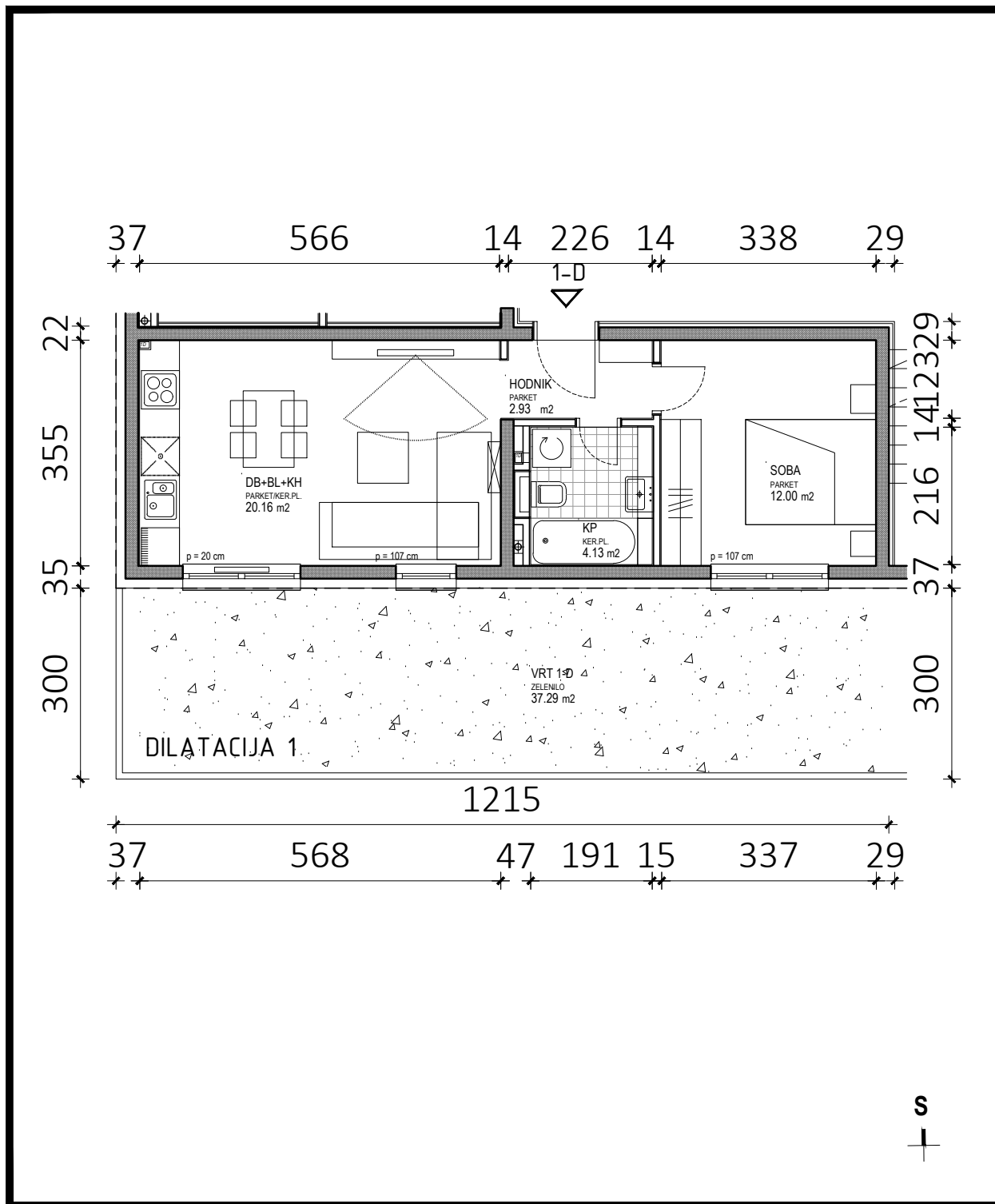
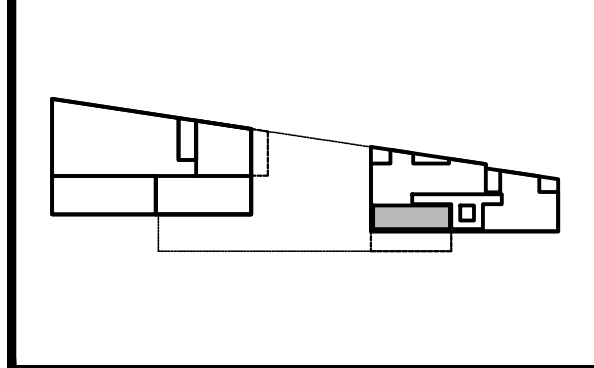
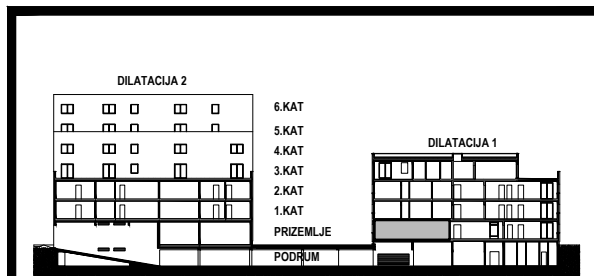


D1 - PRIZEMLJE			
STAN 1-D	netto-površina (m²)	k	netto-obr.površina (m²)
Hodnik	2,93	1,00	2,93
KP	4,13	1,00	4,13
Soba	12,00	1,00	12,00
DB+BL+KH	20,16	1,00	20,16
UKUPNO	39,22		39,22
Pripadajući vrt	51,30	0,10	5,13
STAN 1-C UKUPNO SA VRTOM	90,52		44,35



D1

1-D