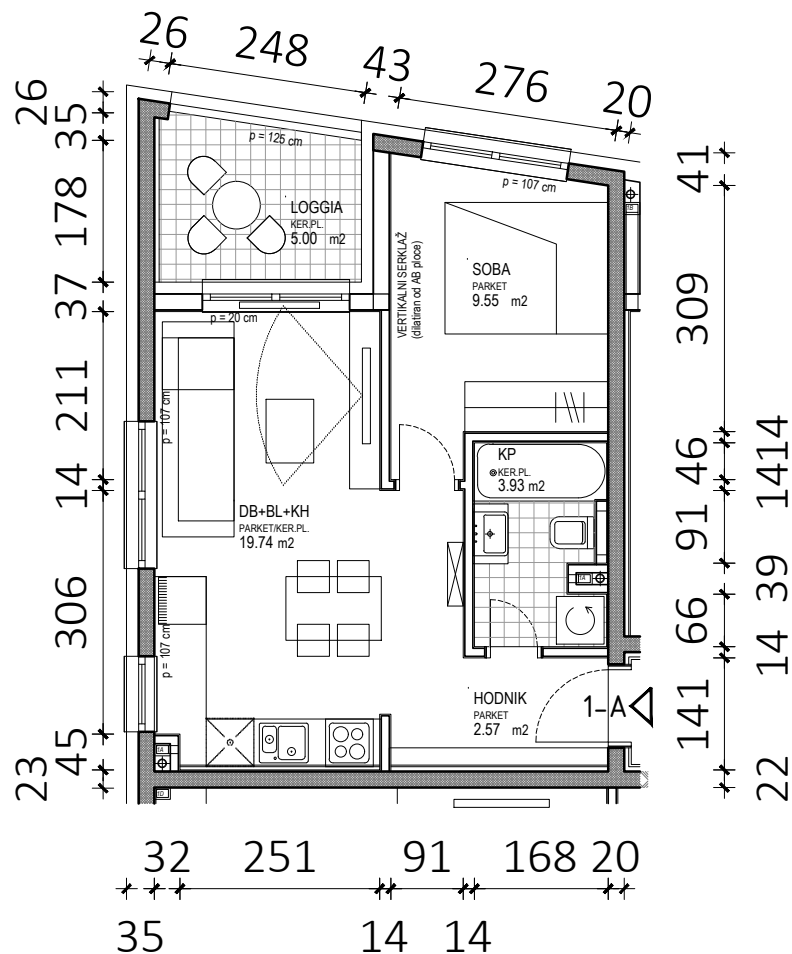
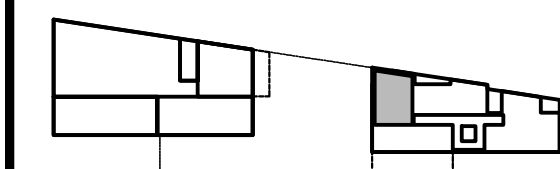
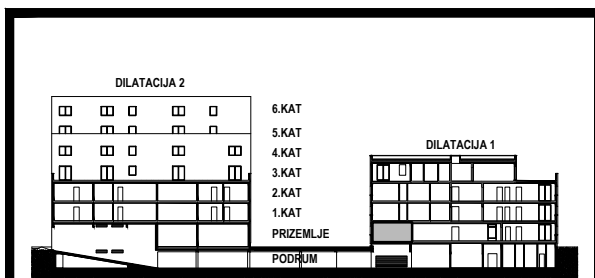


D1 - PRIZEMLJE

STAN 1-A	netto-površina (m ²)	k	netto-obr.površina (m ²)
Hodnik	2,57	1,00	2,57
KP	3,93	1,00	3,93
Soba	9,55	1,00	9,55
DB+BL+KH	19,74	1,00	19,74
UKUPNO	35,79		35,79
Loggia	5,00	0,75	3,75
STAN 1-A UKUPNO	40,79		39,54



D1

1-A